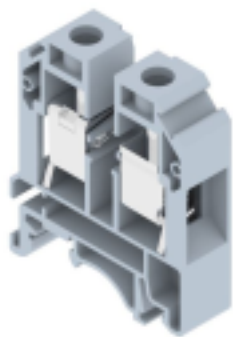


KUT16



Approvals



General Data

Type	KUT16
Wire Termination Technology	Screw Clamp
Ratings	1000 V/76 A/16 sq mm/1.2 Nm
GTIN / Harmonize Custom Code	India
Standard Packing Qty (in No)	50
Country of Origin	INDIA
Screw Size	M4

Dimensions & Weight

Height (mm)	52
Height (inches)	2.05
Width (mm)	44.50
Width (inches)	1.75
Thickness (mm)	12
Weight For Standard Packing Qty (Kg)	1.40

Material Data

Housing	PA 66
Clamping Material	MS
Standard Colour	Grey
Other Color Variants	Black, Blue, Green, Khakhi, Red, Yellow

Rated Conductor Size

Stranded Wire - min (sq mm)	6
Stranded Wire - max (sq mm)	16
Solid Wire - min (sq mm)	6
Solid Wire - max (sq mm)	25

Ratings - IEC

Standard	IEC 60947-7-1
Rated Voltage (V)	1000
Rated Current (A)	76
Rated Cross Section (sq mm)	6
Short Time Withstand Current (kA)	1.92
Rated Impulse Withstand Voltage(kV)	8
Pollution Degree	III

Ratings-ATEX

Certificate No	750
Rated Current (A)	76
Rated Cross Section (sq mm)	16

Ratings-CSA

Rated Voltage (V)	600
Rated Current (A)	100

Protection Cover

PCK3

Height : 28 mm

Width : 58.35 mm

Thickness : 1 mm



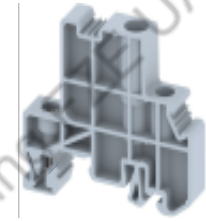
End Clamp

SCUDD

Height : 50 mm

Width : 55.50 mm

Thickness : 10 mm

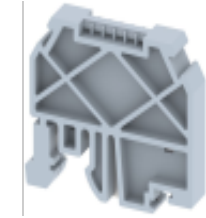


SCUSL

Height : 41 mm

Width : 47.50 mm

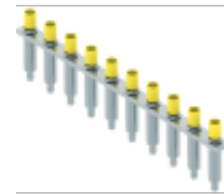
Thickness : 8 mm



Cross Connection Link Assembly

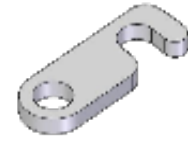
CCLA16

(2W, 3W, 4W, 5W, 6W, 7W, 8W, 10W)



Link for Removable Shorting

RSL16



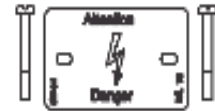
Long Stud For Removable Shorting

LSR10-16



Warning Label

WARNING LABEL WL16



Marking Label

LABEL KN12



Mounting Channel (Standard Lengths 300 mm, 500 mm, 1000 mm)

